

cavalier
homes®
REAL HOMES... REAL PEOPLE.



Parkview Series

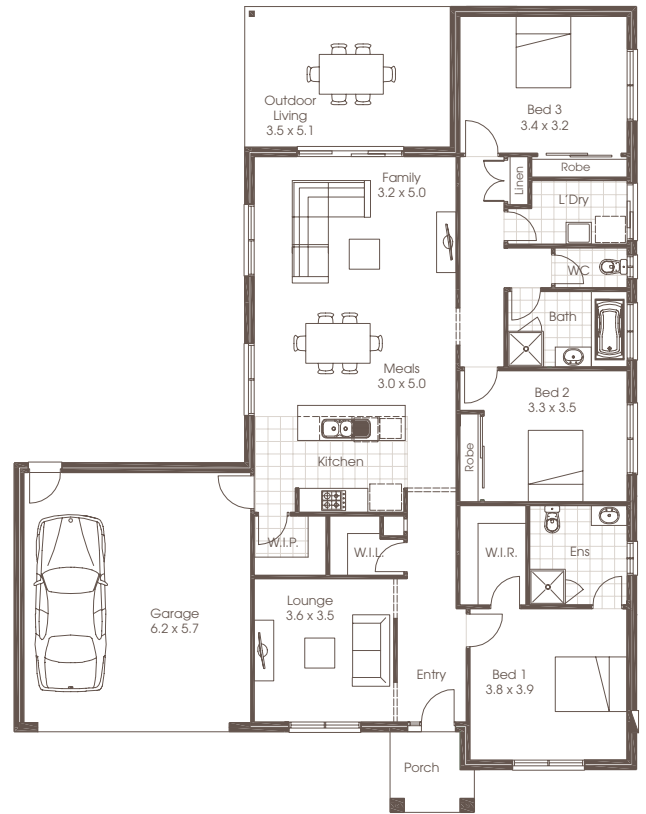
www.cavalierhomes.com.au



PARKVIEW 24 A



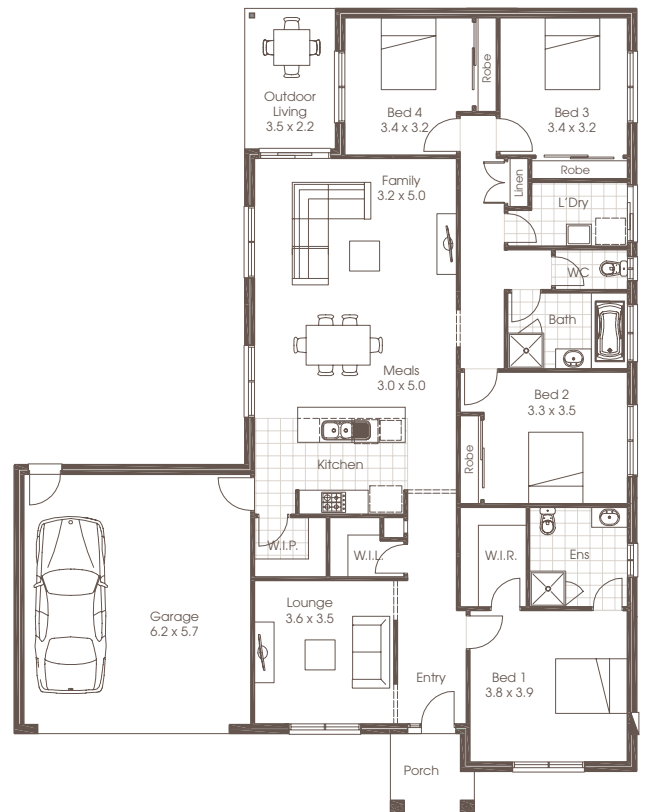
3 Bedrooms	Living	164.27m ²
2 Bathrooms	Garage	40.06m ²
Double Garage	Porch	3.95m ²
Lounge	Outdoor Living	18.23m ²
Family	Total	226.51m ²
Meals		
Kitchen	Width	15.63m
Laundry	Depth	20.24m
Outdoor Living		



PARKVIEW 24 B



4 Bedrooms	Living	174.8m ²
2 Bathrooms	Garage	40.06m ²
Double Garage	Porch	3.95m ²
Lounge	Outdoor Living	8.0m ²
Family	Total	226.3m ²
Meals		
Kitchen	Width	15.63m
Laundry	Depth	20.24m
Outdoor Living		

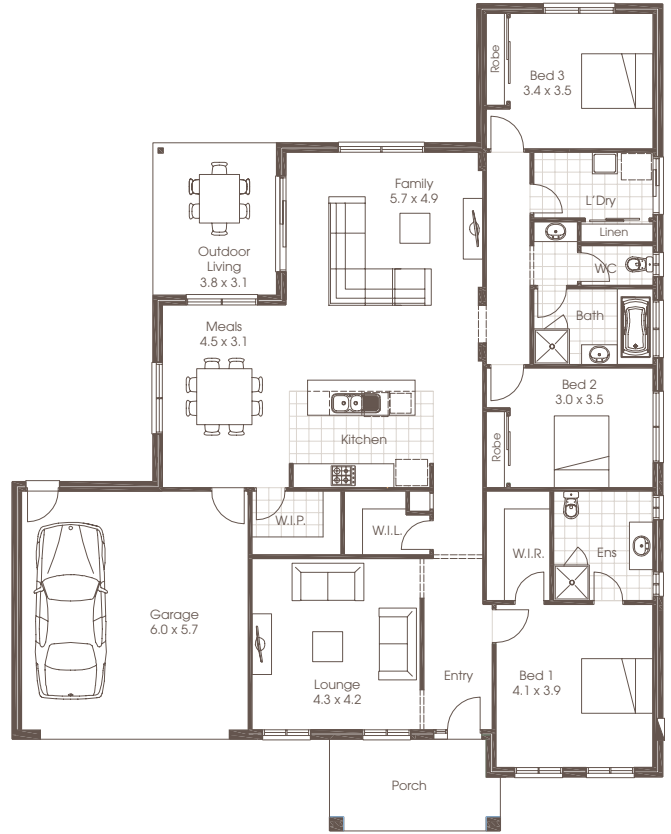


Room sizes shown are approximate only, please refer to final working drawings for actual sizes. Each office is independently owned and operated. Plans are protected by copyright. Prices, inclusions and plans are subject to variation without notice. Display/show home designs and inclusions vary throughout Australia and New Zealand and are provided as a guide only. Please refer to your building contract for the specific design and inclusion details of your new home. Images provided may not be specific to that house type, they are for illustrative purposes only.

PARKVIEW 26



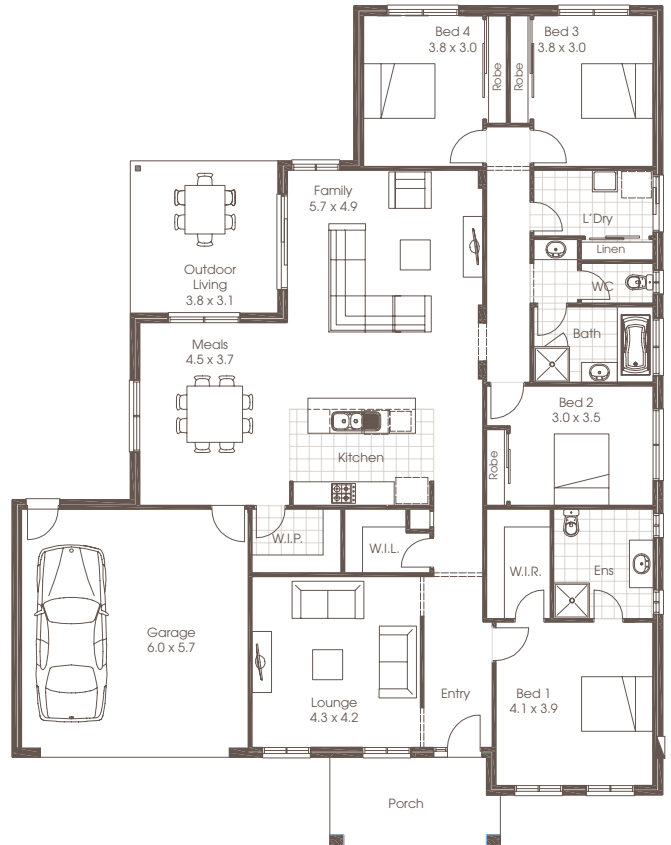
3 Bedrooms	Living	185.54m ²
2 Bathrooms	Garage	37.80m ²
Double Garage	Porch	9.50m ²
Lounge	Outdoor Living	11.90m ²
Family	Total	244.7m ²
Meals		
Kitchen	Width	16.35m
Laundry	Depth	20.77m
Outdoor Living		



PARKVIEW 28



4 Bedrooms	Living	202.10m ²
2 Bathrooms	Garage	37.70m ²
Double Garage	Porch	9.50m ²
Lounge	Outdoor Living	14.20m ²
Family	Total	263.50m ²
Meals		
Kitchen	Width	16.35m
Laundry	Depth	21.17m
Outdoor Living		

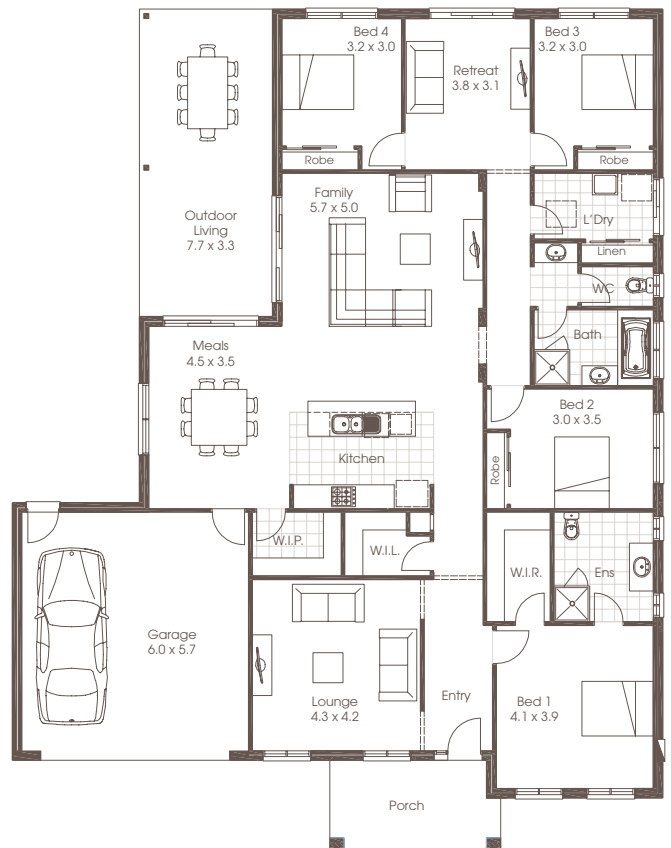




PARKVIEW 30

 | 4
  | 2
  | 2

4 Bedrooms	Living	210.20m ²
2 Bathrooms	Garage	37.70m ²
Double Garage	Porch	9.50m ²
Lounge	Outdoor Living	26.30m ²
Retreat	Total	283.7m ²
Family		
Meals	Width	16.35m
Kitchen	Depth	21.17m
Laundry		
Outdoor Living		



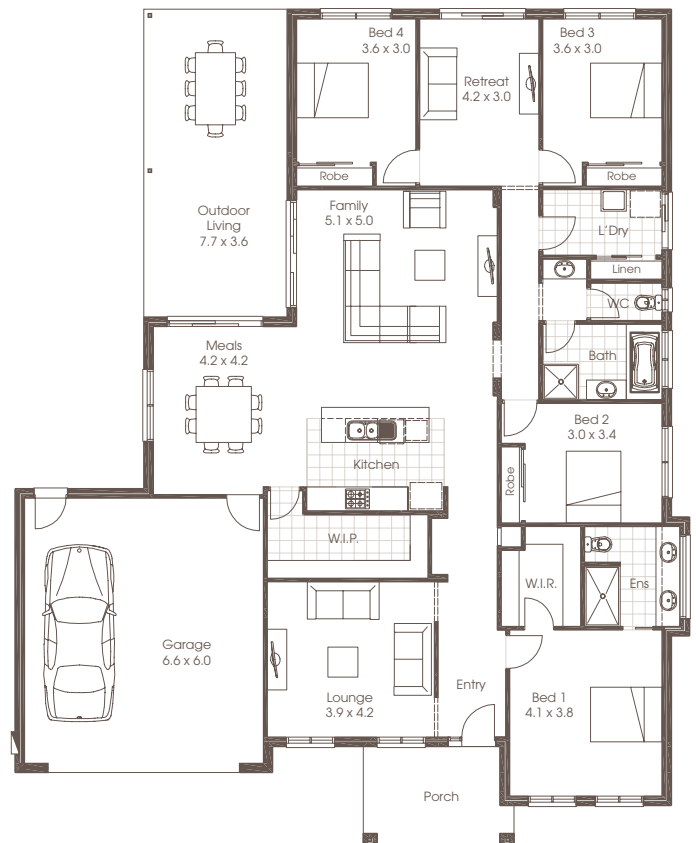
Award winning buildings and designs to suit you.



PARKVIEW 31

 | 4
  | 2
  | 2

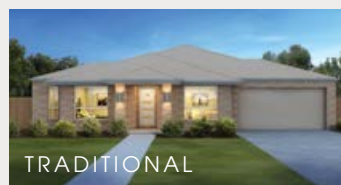
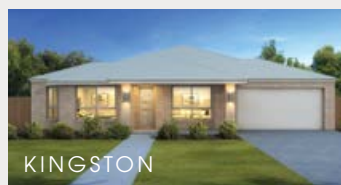
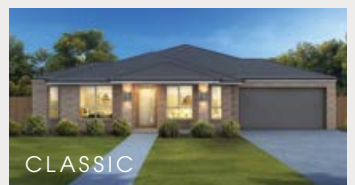
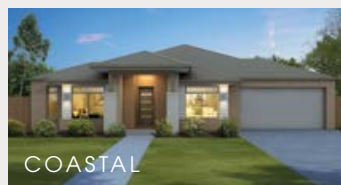
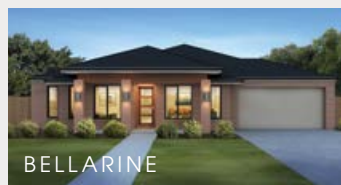
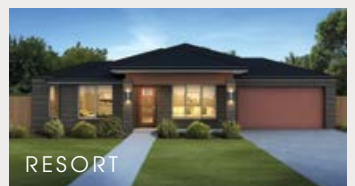
4 Bedrooms	Living	207.03m ²
2 Bathrooms	Garage	43.91m ²
Double Garage	Porch	8.35m ²
Lounge	Outdoor Living	28.62m ²
Retreat	Total	287.91m ²
Family		
Meals	Width	16.94m
Kitchen	Depth	21.05m
Laundry		
Outdoor Living		





The Parkview offers the ultimate in home living with the design being architecturally driven to optimise spaciousness through an open plan layout that cleverly draws in an abundance of natural light. It takes advantage of the view onto the outdoor living area whilst the kitchen is set to inspire and entertain. The choice of 3 or 4 bedrooms adds to the versatility and ensures there's an option to suit every budget.

FACADE OPTIONS



Plans are copyright. Prices, inclusions and plans are subject to variation without notice and vary throughout Australasia. Display and show home designs and inclusions vary throughout Australasia and are provided as a guide only. Please refer to your building contract for the specific design and inclusion details of your new home. Unless otherwise stated in writing retail new home prices do not include furniture, decorator items, driveways, paths, landscaping, swimming pools, light fittings, window and floor coverings (except tiles to WCs, bathrooms and laundries), letterboxes, fencing, security, vacuum systems, telephone, intercom and communication systems and air conditioning. Photographs shown in this brochure are indicative only to depict the style of Cavalier designs and may not be of this series design. Width and depth dimensions shown to floor plans are measured to external brick work and do not include eaves. Eaves are not included as standard. Additional costs apply.

Cavalier Homes Registered Builders in Albury-Wodonga CDB-U 48509 (VIC) 184744C (NSW), Bendigo CDB-U 50034, Greater Western Sydney 332118C, Goulburn Valley CDB-U 51879 (VIC) 316535C (NSW), Goldfields CDB-U 58723, Melbourne West CDB-M 49760, North Coast 209455C, Wagga Wagga 196616C.