

cavalier
homes®
REAL HOMES... REAL PEOPLE.



Barkly Duplex

www.cavalierhomes.com.au



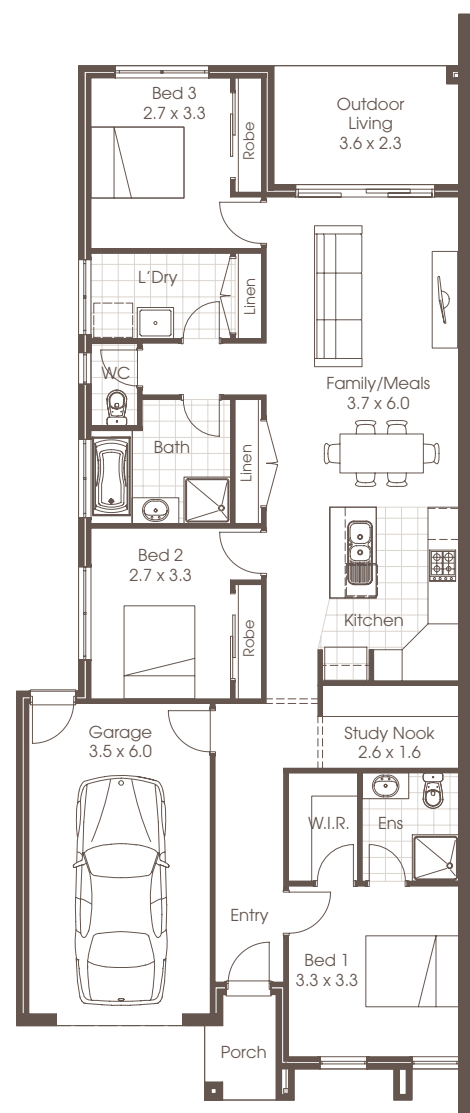
Award winning buildings and designs to suit you.



BARKLY DUPLEX

 | 3  | 2  | 1

3 Bedrooms	Living	116.94m ²
2 Bathrooms	Garage	23.65m ²
Single Garage	Porch	2.95m ²
Study Nook	Outdoor Living	8.49m ²
Family/Meals	Total	152.03m ²
Kitchen		
Laundry	Width	8.67m
Outdoor Living	Depth	21.4m



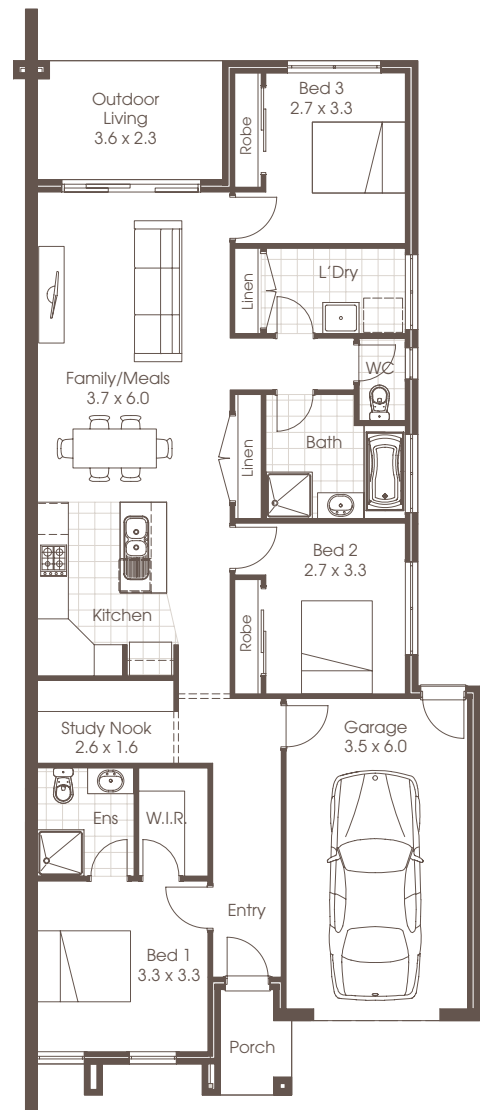
Room sizes shown are approximate only, please refer to final working drawings for actual sizes. Each office is independently owned and operated. Plans are protected by copyright. Prices, inclusions and plans are subject to variation without notice. Display/show home designs and inclusions vary throughout Australia and New Zealand and are provided as a guide only. Please refer to your building contract for the specific design and inclusion details of your new home. Images provided may not be specific to that house type, they are for illustrative purposes only.



BARKLY DUPLEX – MIRRORED

 | 3
  | 2
  | 1

3 Bedrooms	Living	116.94m ²
2 Bathrooms	Garage	23.65m ²
Single Garage	Porch	2.95m ²
Study Nook	Outdoor Living	8.49m ²
Family/Meals	Total	152.03m ²
Kitchen		
Laundry	Width	8.67m
Outdoor Living	Depth	21.4m





FACADE OPTIONS

This compact home suited for narrow allotments in the form of a duplex will delight those looking for a single-storey home that still has all the accommodation. Behind the attractive façade you will find a three bedroom home that also includes a well-planned living area. The master bedroom features a walk-in-robe and ensuite bathroom. This smart and stylish home has plenty of room for a growing family.



Standard

Plans are copyright. Prices, inclusions and plans are subject to variation without notice and vary throughout Australasia. Display and show home designs and inclusions vary throughout Australasia and are provided as a guide only. Please refer to your building contract for the specific design and inclusion details of your new home. Unless otherwise stated in writing retail new home prices do not include furniture, decorator items, driveways, paths, landscaping, swimming pools, light fittings, window and floor coverings (except tiles to WCs, bathrooms and laundries), letterboxes, fencing, security, vacuum systems, telephone, intercom and communication systems and air conditioning. Photographs shown in this brochure are indicative only to depict the style of Cavalier designs and may not be of this series design. Width and depth dimensions shown to floor plans are measured to external brick work and do not include eaves. Eaves are not included as standard. Additional costs apply.

Cavalier Homes Registered Builders in Albury-Wodonga CDB-U 48509 (VIC) 184744C (NSW), Bendigo CDB-U 50034, Greater Western Sydney 332118C, Goulburn Valley CDB-U 51879 (VIC) 316535C (NSW), Goldfields CDB-U 58723, Melbourne West CDB-M 49760, North Coast 209455C, Wagga Wagga 196616C.