

\* DISPLAY ONLY

cavalier  
homes®



# MANLY 36

## HOUSE ONLY

4  | 2  | 2 

LIVING 259.60m<sup>2</sup>  
GARAGE 37.70m<sup>2</sup>  
TOTAL = 333.20m<sup>2</sup>

WIDTH 14.80m  
DEPTH 25.00m

### PRICE

**\$426,127.00**

### DETAILS

House price is based on our "Lifestyle Plus Inclusions"  
\$3500 Allowance for piers and M Class Soil type

#### HIGHLIGHT INCLUSIONS:

- Colorbond Roof
- 2590mm Ceilings
- Floor Coverings with carpet and choice of tiles or vinyl
- Haymes 3-Coat Paint System
- 900mm Westinghouse Appliances
- Ducted Air-con
- 7 Star Energy Rating
- 50sqm of exposed aggregate driveway
- 6KW PV Solar
- Upgrade Lighting and Fan Package
- Quality Oliveri Fixtures and Fittings

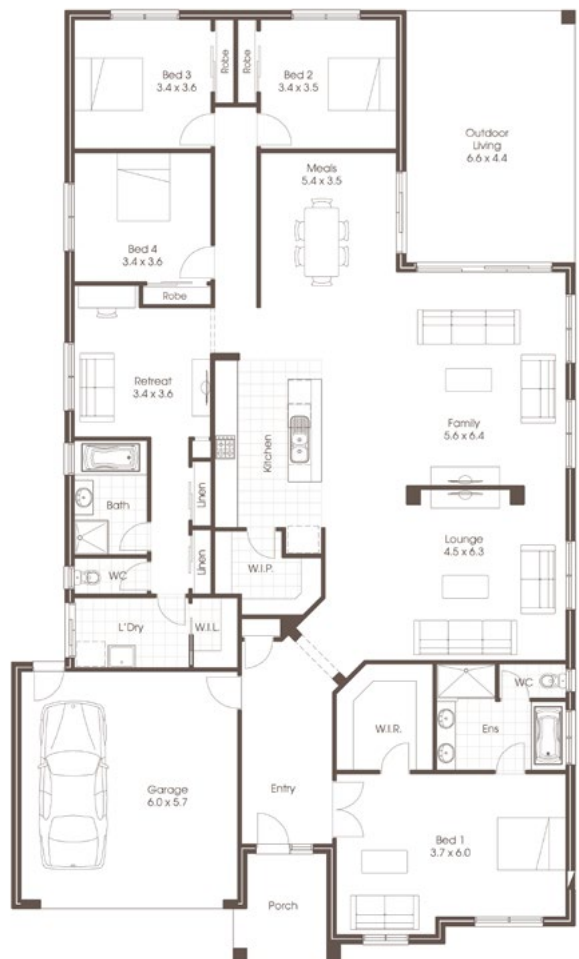
### FOR FURTHER INFORMATION

3/37 Agnes Street, Morningside QLD 4170

**P** 07 3395 5670

**E** nathan.dunn@cavalierhomes.com.au

www.cavalierhomes.com.au



All Cavalier Homes designs are copyright. Prices, inclusions and plans are subject to variation without notice and may vary throughout Australia. Display Home designs and inclusions vary throughout Australia and are provided as a guide only. Please refer to your building contract for the specific design and inclusions of your new home. Unless otherwise stated in writing new home prices do not include furniture, decorator items, driveways, paths, landscaping, swimming pools, letterboxes, fencing, security systems, vacuum systems, telephone, intercom and communication systems, air conditioning, heating systems and or connection fees. Images shown in this brochure are indicative only to depict the style of Cavalier designs. Cavalier Homes Registered Builders in Albury-Wodonga CDB-U 48509 (VIC) 184744C (NSW), Bendigo CDB-U 50034, Central West 342075C (NSW), Geelong CDB-U 63574 (VIC), Gold Coast QBC 1311187 (QLD), Goulburn Valley CDB-U 51879 (VIC) 316535C (NSW), Greater Brisbane 15049577 (QLD), Greater Melbourne East DB-U 12645 (VIC), Greater Newcastle 334818C (NSW), Greater Tweed 373931C (NSW), Greater Western Sydney 332118C, Illawarra 343899C (NSW), Melbourne North East DB-U47472 (VIC), Melbourne West CDB-U 67918, Hobart 191512508 (TAS), Southern Highlands 249694C (NSW), Sunshine Coast 1306106 (QLD), Sydney North West 348617C (NSW), Toowoomba 1202352 (QLD).