



Inglewood 29

HOUSE & LAND PACKAGE

🍷 | 4 🚿 | 2 🚗 | 2

Address **Lot No: 18**
Address: Marlboro Drive , Shiralee Park,
Kialla
Lot Size: 1100^{m2}

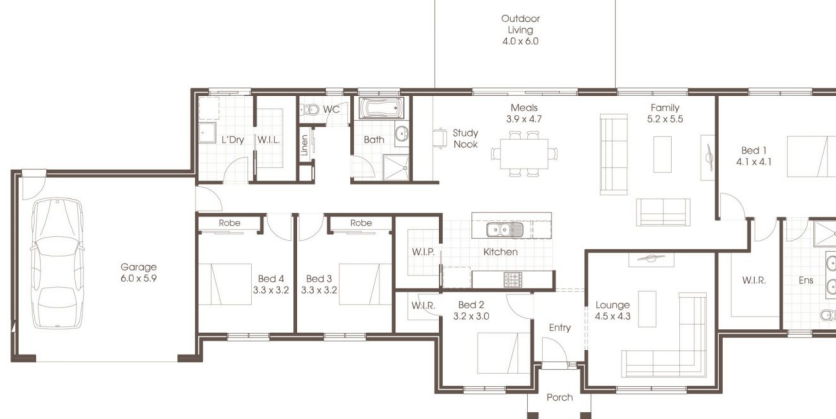
For further information contact Cavalier Homes
Gayle Laree
0457 366 230

Price **\$718,450**

Lifestyle Standard Inclusions ...

- * Colorbond Roof with Sarking
- * Ceiling fixed to a metal batten system
- * Standard Brick Façade
- * Bricks over all windows, sliding doors, garage
- * H1-D Class slab with 800mm deep piers
- * Power, water, plus sewer to suit block
- * Bushfire requirements (if applicable)

- * Evaporative Cooling - Ducted gas heating
- * Quality Carpet and Tiles throughout
- * 20 x LED Downlights with x 3 pendent lights
- * 50m² of Natural concrete, plus 30m² extra
- * Natural concrete to crossover
- * Front Entrance Door Pack upgrade
- * Kitchen upgrades with Westinghouse appliances
- * Window Coverings - Roller Blinds



Cavalier Homes Registered Builders in Goulburn Valley CDB-U 51879 (VIC)316535C (NSW)

Each office is independently owned and operated. Room sizes shown are approximate only, please refer to final working drawings for actual sizes. Plans are protected by copyright. Prices, inclusions and plans are subject to variation without notice. Display/show home designs and inclusions vary throughout Australia and New Zealand and are provided as a guide only. Please refer to your building contract for the specific design and inclusion details of your new home.

*Conditions Apply. Contact us for all information regarding the inclusions. Site allowances subject to soil reports & Engineering report. This information sheet is a guide only.