



Adelaide 24

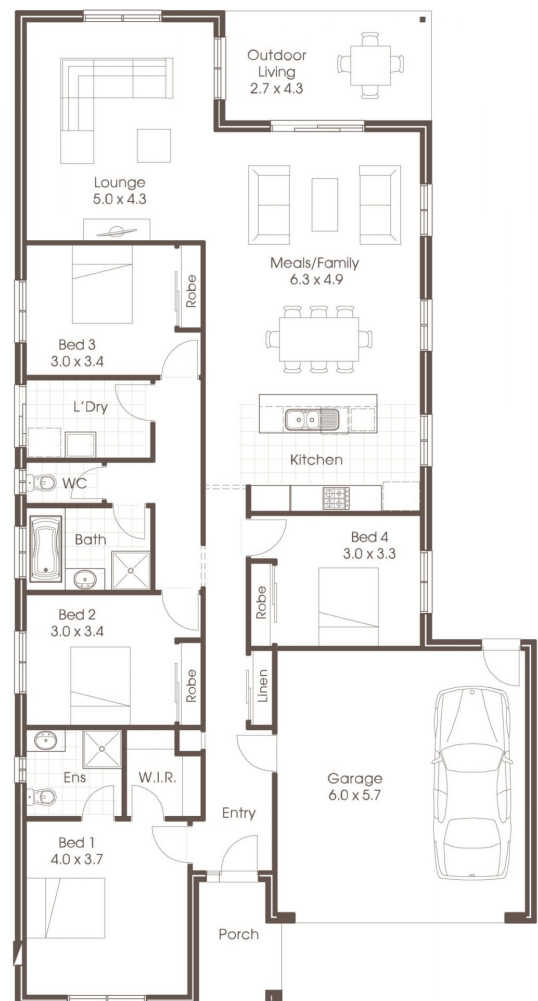
HOUSE & LAND PACKAGE

🍷 | 4 🚿 | 2 🚗 | 2

Address **Lot No: 4205**
Address: Triton Blvd , Huntlee, Huntlee
Lot Size: 486.6^{m2}

Price **\$661,958**

Image shown depicts Hamptons A façade
 House and Land package price is based on
 Lifestyle Inclusions
 Colorbond Roof
 450mm Eaves
 2.400 mm ceilings
 Haymes 3 coat paint system
 600mm Westinghouse stainless steel appliances
 Ducted Air-Conditioning
 R3.5 batts to ceilings and R2.0 batts to external
 Walls



For further information contact Cavalier Homes

Terry Clayton
0432 331 951

Cavalier Homes Registered Builders in Greater Newcastle 334818C (NSW)
 Each office is independently owned and operated. Room sizes shown are approximate only, please refer to final working drawings for actual sizes. Plans are protected by copyright. Prices, inclusions and plans are subject to variation without notice. Display/show home designs and inclusions vary throughout Australia and New Zealand and are provided as a guide only. Please refer to your building contract for the specific design and inclusion details of your new home.
 *Conditions Apply. Contact us for all information regarding the inclusions. Site allowances subject to soil reports & Engineering report. This information sheet is a guide only.