

Bayview 23

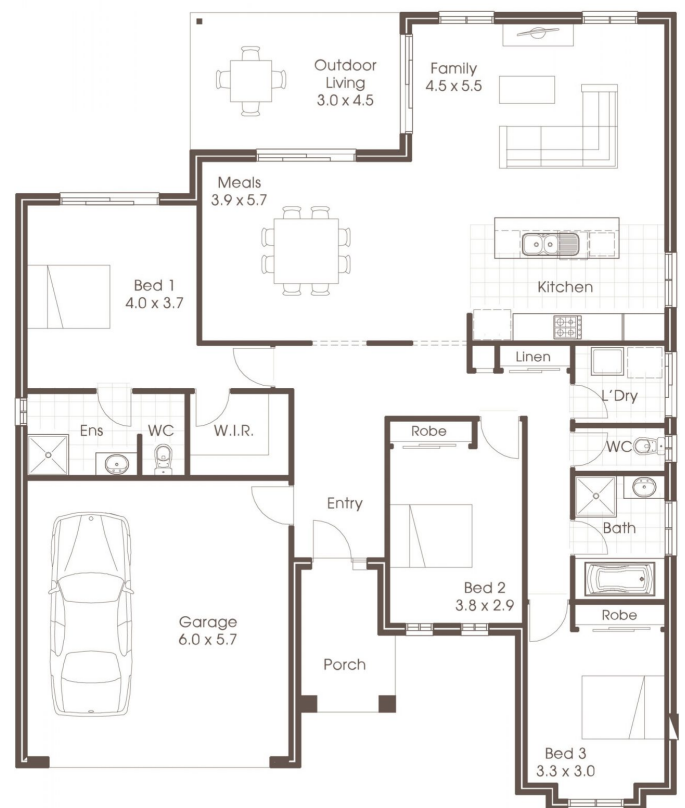
HOUSE & LAND PACKAGE

🏠 | 3 🚿 | 2 🚗 | 2

Address **Lot No: Lot 4**
Address: Emu Creek Rd, Emu Rise,
Strathfieldsaye
Lot Size: 630^{m2}

Price **\$661,724**

Site Cost Allowance
2020 Inclusions with Grange Façade
Colorbond Roofing
Remote Control Sectional Panel Lift Garage Door
3 Coat Paint System
900mm Westinghouse Appliances
20mm Stone Benchtop to Kitchen
20 x Downlights
Floor Coverings Throughout
Flyscreens to all openable Windows & Sliding Doors
Gas ducted Heating
Evaporative Cooling
Pricing Subject to Final Estate Covenants
Plus much, much more!.....



For further information contact Cavalier Homes

Lisa Nankervis
0448 177 483

Cavalier Homes Registered Builders in Bendigo CDB-U 50034 (VIC)
Each office is independently owned and operated. Room sizes shown are approximate only, please refer to final working drawings for actual sizes. Plans are protected by copyright. Prices, inclusions and plans are subject to variation without notice. Display/show home designs and inclusions vary throughout Australia and New Zealand and are provided as a guide only. Please refer to your building contract for the specific design and inclusion details of your new home.
*Conditions Apply. Contact us for all information regarding the inclusions. Site allowances subject to soil reports & Engineering report. This information sheet is a guide only.